

\$174,800 - 116 10404 24 Avenue, Edmonton

MLS® #E4430645

\$174,800

2 Bedroom, 1.00 Bathroom, 1,204 sqft

Condo / Townhouse on 0.00 Acres

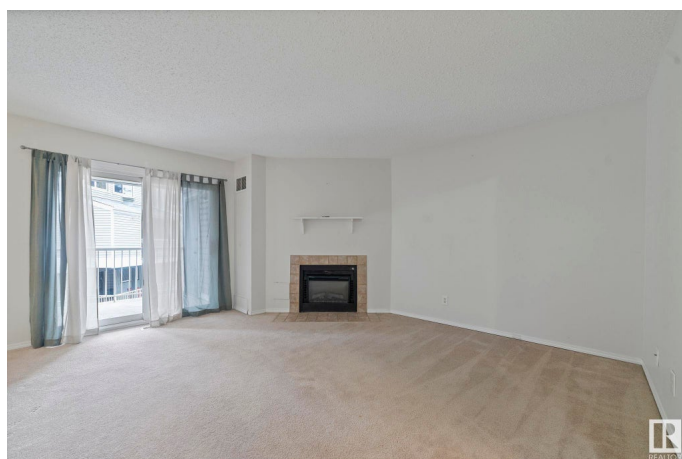
Ermineskin, Edmonton, AB

Bright and spacious 2-storey in Ermineskin offering fantastic value for first-time buyers or investors! The upper level features 2 bedrooms, a 4-piece bath, walk-through closet from the primary bedroom, and convenient upstairs laundry. On the main floor, enjoy a large living room with sliding doors opening to green space, a functional kitchen with plenty of cabinets, dining area, and lots of storage space. Includes an energized parking stall and a newer furnace and hot water tank (approx. 6 years old). Great location near Century Park LRT, South Edmonton Common, Henday, and Calgary Trail!

Built in 1978

Essential Information

MLS® #	E4430645
Price	\$174,800
Bedrooms	2
Bathrooms	1.00
Full Baths	1
Square Footage	1,204
Acres	0.00
Year Built	1978
Type	Condo / Townhouse
Sub-Type	Stacked Townhouse
Style	2 Storey



Status	Active
--------	--------

Community Information

Address	116 10404 24 Avenue
Area	Edmonton
Subdivision	Ermineskin
City	Edmonton
County	ALBERTA
Province	AB
Postal Code	T6J 4J7

Amenities

Amenities	No Animal Home, Storage-In-Suite
Parking	Stall

Interior

Appliances	Dishwasher-Built-In, Dryer, Hood Fan, Oven-Microwave, Refrigerator, Stove-Electric, Washer
Heating	Forced Air-1, Natural Gas
Stories	2
Has Basement	Yes
Basement	None, No Basement

Exterior

Exterior	Wood, Vinyl
Exterior Features	Flat Site, Landscaped, Picnic Area, Playground Nearby, Schools, Shopping Nearby
Roof	Asphalt Shingles
Construction	Wood, Vinyl
Foundation	Concrete Perimeter

Additional Information

Date Listed	April 12th, 2025
Days on Market	8
Zoning	Zone 16
Condo Fee	\$246

DATA IS DEEMED RELIABLE BUT IS NOT GUARANTEED ACCURATE BY THE REALTORS® ASSOCIATION OF EDMONTON. COPYRIGHT 2025 BY THE REALTORS® ASSOCIATION OF EDMONTON. ALL RIGHTS RESERVED. Trademarks are owned or controlled by the Canadian Real Estate Association (CREA) and identify real estate professionals who are members of CREA (REALTOR®, REALTORS®) and/or the quality of services they

provide (MLS®®, Multiple Listing Service®®)
Listing information last updated on April 20th, 2025 at 6:47am MDT