

\$293,000 - 214 10523 123 Street, Edmonton

MLS® #E4426843

\$293,000

2 Bedroom, 2.00 Bathroom, 888 sqft
Condo / Townhouse on 0.00 Acres

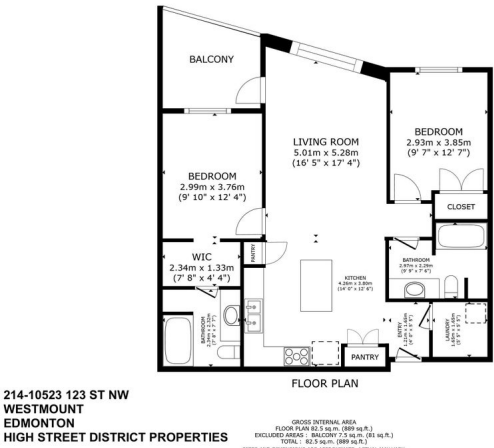
Westmount, Edmonton, AB

MODERN 2-BED, 2-BATH CONDO W/ A/C, IN-SUITE LAUNDRY & UNDERGROUND PARKING – STEPS TO 124 ST & BREWERY DISTRICT! Welcome to High Street District Properties—a stylish, centrally located home designed for the ultimate urban lifestyle. Just steps from Edmonton’s best cafes, bakeries, breweries, restaurants, and cocktail bars, plus easy access to the river valley, bike paths & dog park! This bright & functional layout features 2 separated bedrooms (perfect for roommates!), an open-concept kitchen & living space with a massive island, and stunning west-facing windows for gorgeous sunset views. Enjoy summer nights on the spacious balcony w/ gas hookup! Upgrades include engineered hardwood, sleek stainless steel appliances, tile backsplash, a central heat pump w/ A/C, big windows, front-load laundry & tons of closet space. Plus, enjoy underground parking & a rooftop patio! And the top it all, it's pet friendly! Move-in ready—come see it today!

Built in 2013

Essential Information

MLS® #	E4426843
Price	\$293,000
Bedrooms	2



Bathrooms	2.00
Full Baths	2
Square Footage	888
Acres	0.00
Year Built	2013
Type	Condo / Townhouse
Sub-Type	Lowrise Apartment
Style	Single Level Apartment
Status	Active

Community Information

Address	214 10523 123 Street
Area	Edmonton
Subdivision	Westmount
City	Edmonton
County	ALBERTA
Province	AB
Postal Code	T5N 1N9

Amenities

Amenities	Air Conditioner, Parking-Visitor
Parking Spaces	1
Parking	Heated, Underground

Interior

Interior Features	ensuite bathroom
Appliances	Air Conditioning-Central, Dishwasher-Built-In, Dryer, Garage Control, Microwave Hood Fan, Refrigerator, Stove-Electric, Washer
Heating	Heat Pump, Electric, Natural Gas
# of Stories	4
Stories	4
Has Basement	Yes
Basement	None, No Basement

Exterior

Exterior	Wood, Metal, Stucco
Exterior Features	Public Transportation, Shopping Nearby
Roof	Roll Roofing
Construction	Wood, Metal, Stucco

Foundation Concrete Perimeter

School Information

Elementary Wāhkwāntāwin School
Middle Westminster School
High Victoria School

Additional Information

Date Listed March 21st, 2025
Days on Market 28
Zoning Zone 07
Condo Fee \$592

DATA IS DEEMED RELIABLE BUT IS NOT GUARANTEED ACCURATE BY THE REALTORS® ASSOCIATION OF EDMONTON. COPYRIGHT 2025 BY THE REALTORS® ASSOCIATION OF EDMONTON. ALL RIGHTS RESERVED.Trademarks are owned or controlled by the Canadian Real Estate Association (CREA) and identify real estate professionals who are members of CREA (REALTOR®, REALTORS®) and/or the quality of services they provide (MLS®, Multiple Listing Service®)
Listing information last updated on April 18th, 2025 at 1:32pm MDT