

Courtesy Of Jas S Dogra Of MaxWell Polaris

\$489,000 - 30 Westwyck Link, Spruce Grove

MLS® #E4424694

\$489,000

3 Bedroom, 3.00 Bathroom, 1,691 sqft
Single Family on 0.00 Acres

Fenwyck, Spruce Grove, AB

Your new address in Fenwyck surrounded by walkways and trails. This beautiful open concept home boasts a huge living space with a feature fireplace wall and an ample sized kitchen, a big island with a neatly tucked away dining area. A Den/Bedroom with a full bathroom and Laundry on the main floor. Upstairs consist of a bonus room, A primary bedroom with a good sized en-suite and a walk-in-closet. Two more good sized bedrooms with a full bathroom. The package gets completed and complimented by a 10'x10' deck and a double detached garage. A separate entrance to the basement is another extra feature. Still time to choose your finishings

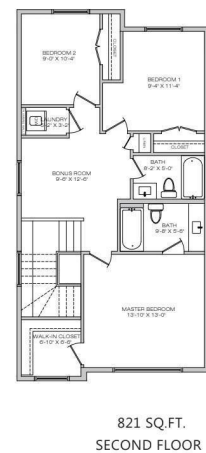
Built in 2025

Essential Information

MLS® #	E4424694
Price	\$489,000
Bedrooms	3
Bathrooms	3.00
Full Baths	3
Square Footage	1,691
Acres	0.00
Year Built	2025
Type	Single Family



CANNES
1690sq.ft.
House Width - 22'



Floor plan, specifications & dimensions shown are approximate and subject to change without notice.

Sub-Type Detached Single Family
Style 2 Storey
Status Active

CANNES

1690sq.ft.
House Width - 22'

Community Information

Address 30 Westwyck Link
Area Spruce Grove
Subdivision Fenwyck
City Spruce Grove
County ALBERTA
Province AB
Postal Code T7X 3H1

Amenities

Amenities See Remarks
Parking Double Garage Detached

Interior

Interior Features ensuite bathroom
Appliances See Remarks
Heating Forced Air-1, Natural Gas
Stories 2
Has Basement Yes
Basement Full, Unfinished

Exterior

Exterior Wood, Fiber Cement, Stone, Vinyl
Exterior Features See Remarks
Roof Asphalt Shingles
Construction Wood, Fiber Cement, Stone, Vinyl
Foundation Concrete Perimeter

Additional Information

Date Listed March 7th, 2025
Days on Market 35
Zoning Zone 91



869 SQ.FT.
MAIN FLOOR

821 SQ.FT.
SECOND FLOOR

REALTOR®

DATA IS DEEMED RELIABLE BUT IS NOT GUARANTEED ACCURATE BY THE REALTORS® ASSOCIATION OF EDMONTON. COPYRIGHT 2025 BY THE REALTORS® ASSOCIATION OF EDMONTON. ALL RIGHTS RESERVED. Trademarks are owned or controlled by the Canadian Real Estate Association (CREA) and identify real estate professionals who are members of CREA (REALTOR®, REALTORS®) and/or the quality of services they

provide (MLS® , Multiple Listing Service®)

Listing information last updated on April 11th, 2025 at 6:17pm MDT