

\$569,000 - 2923 24 Avenue, Edmonton

MLS® #E4419829

\$569,000

5 Bedroom, 3.50 Bathroom, 2,055 sqft
Single Family on 0.00 Acres

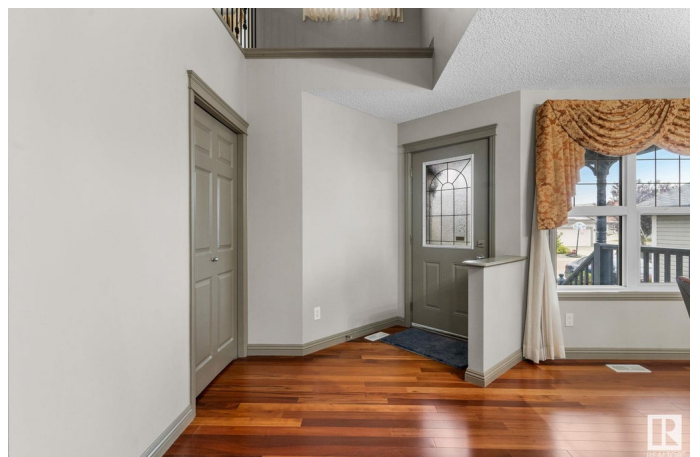
Silver Berry, Edmonton, AB

MOVE IN READY! Once you step in, you will understand the love and care this home has received over the years. This family home is for sale by the original owners. With more than 3000 SqFt of living space, there is room for the entire family with a total of 5 spacious bedrooms (3 up, 2 down) and 3 and a half bathrooms. The primary suite features a gorgeous 4 piece ensuite with practically endless counter space and walk in closet. The kitchen features beautiful stone counter tops with a new fridge (2024) and microwave range hood fan (2024). The location is also incredibly convenient! It is Less than a 10 minute walk from groceries and restaurants, 5 minutes to the Anthony Henday, 6 Minutes to the Whitemud, and amazing access to a 5km green belt walking path. The family put years of love into the garden and backyard oasis with the luxury of no rear neighbour. If you enjoy music and entertainment there are also built in speakers throughout the main and second floor. 100% a must see!

Built in 2007

Essential Information

MLS® #	E4419829
Price	\$569,000
Bedrooms	5



Bathrooms	3.50
Full Baths	3
Half Baths	1
Square Footage	2,055
Acres	0.00
Year Built	2007
Type	Single Family
Sub-Type	Detached Single Family
Style	2 Storey
Status	Active

Community Information

Address	2923 24 Avenue
Area	Edmonton
Subdivision	Silver Berry
City	Edmonton
County	ALBERTA
Province	AB
Postal Code	T6T 0G7

Amenities

Amenities	On Street Parking, Deck, Detectors Smoke, Front Porch, Hot Water Natural Gas, No Animal Home, No Smoking Home
Parking Spaces	4
Parking	Double Garage Attached

Interior

Interior Features	ensuite bathroom
Appliances	Dryer, Garage Opener, Microwave Hood Fan, Refrigerator, Storage Shed, Stove-Gas, Washer, Window Coverings
Heating	Forced Air-1, Natural Gas
Fireplace	Yes
Fireplaces	Tile Surround
Stories	3
Has Basement	Yes
Basement	Full, Finished

Exterior

Exterior	Wood, Stone, Vinyl
----------	--------------------

Exterior Features	Airport Nearby, Fenced, Golf Nearby, Landscaped, No Back Lane, Playground Nearby, Public Transportation, Schools, Shopping Nearby, See Remarks
Roof	Asphalt Shingles
Construction	Wood, Stone, Vinyl
Foundation	Concrete Perimeter

Additional Information

Date Listed	January 31st, 2025
Days on Market	42
Zoning	Zone 30

DATA IS DEEMED RELIABLE BUT IS NOT GUARANTEED ACCURATE BY THE REALTORS® ASSOCIATION OF EDMONTON. COPYRIGHT 2025 BY THE REALTORS® ASSOCIATION OF EDMONTON. ALL RIGHTS RESERVED. Trademarks are owned or controlled by the Canadian Real Estate Association (CREA) and identify real estate professionals who are members of CREA (REALTOR®, REALTORS®) and/or the quality of services they provide (MLS®, Multiple Listing Service®)

Listing information last updated on March 14th, 2025 at 2:02pm MDT