

\$549,900 - 3213 4 Street, Edmonton

MLS® #E4411677

\$549,900

4 Bedroom, 3.50 Bathroom, 1,346 sqft
Single Family on 0.00 Acres

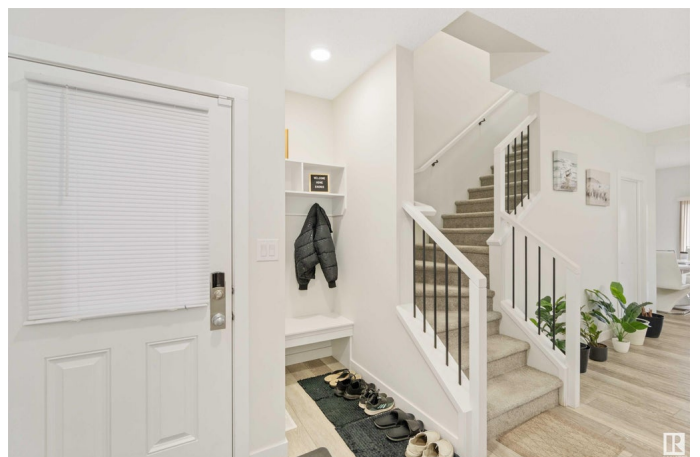
Maple Crest, Edmonton, AB

Step into this beautifully designed 1,345 SqFt half duplex, located in the sought-after Maple neighbourhood. The bright and airy main floor features an open-concept kitchen with stainless steel appliances, seamlessly flowing into the living area—perfect for everyday living and entertaining. Upstairs, you’ll find a well-laid-out space with a spacious primary bedroom with an ensuite, two additional bedrooms, and a 3-piece bathroom. The second floor is carpeted, adding comfort and warmth. The self-contained 1-bedroom in-law space in the basement has its own private entrance, kitchen, full bathroom, and ample storage. Outside, enjoy the fully fenced and landscaped yard, complete with a deck that's perfect for outdoor gatherings. Additional features include a double attached garage, full air conditioning, and durable vinyl plank flooring. All this home needs is YOU!

Built in 2022

Essential Information

MLS® #	E4411677
Price	\$549,900
Bedrooms	4
Bathrooms	3.50
Full Baths	3
Half Baths	1



Square Footage	1,346
Acres	0.00
Year Built	2022
Type	Single Family
Sub-Type	Half Duplex
Style	2 Storey
Status	Active

Community Information

Address	3213 4 Street
Area	Edmonton
Subdivision	Maple Crest
City	Edmonton
County	ALBERTA
Province	AB
Postal Code	T6T 2S9

Amenities

Amenities	On Street Parking, Air Conditioner, Deck, Detectors Smoke, No Animal Home, No Smoking Home
Parking	Double Garage Attached

Interior

Interior Features	ensuite bathroom
Appliances	Air Conditioning-Central, Dishwasher-Built-In, Dryer, Garage Control, Garage Opener, Refrigerator, Stove-Gas, Washer, Window Coverings
Heating	Forced Air-1, Natural Gas
Stories	3
Has Basement	Yes
Basement	Full, Finished

Exterior

Exterior	Wood, Stone, Vinyl
Exterior Features	Fenced, Flat Site, Landscaped, No Through Road, Playground Nearby, Public Transportation, Schools, Shopping Nearby
Roof	Asphalt Shingles
Construction	Wood, Stone, Vinyl
Foundation	Concrete Perimeter

School Information

Elementary	Julia Kiniski School (K-6)
Middle	Thelma Chalifoux (7-9)
High	Elder Dr. Francis Whiskey

Additional Information

Date Listed October 25th, 2024

Days on Market 140

Zoning Zone 30

DATA IS DEEMED RELIABLE BUT IS NOT GUARANTEED ACCURATE BY THE REALTORS® ASSOCIATION OF EDMONTON. COPYRIGHT 2025 BY THE REALTORS® ASSOCIATION OF EDMONTON. ALL RIGHTS RESERVED. Trademarks are owned or controlled by the Canadian Real Estate Association (CREA) and identify real estate professionals who are members of CREA (REALTOR®, REALTORS®) and/or the quality of services they provide (MLS®, Multiple Listing Service®)

Listing information last updated on March 14th, 2025 at 4:02pm MDT